



# Flaker/Dispenser Units

---

## Drain Down/Shutdown of Ice Making Systems

**Hubbard Systems – 01473 350045**

Revision – 18/03/20

**Note** - This document is to give the preferred instruction as to how cleaning and sanitizing of the internal areas of the countertop ice dispenser is completed. This does not cover the unit production & water system within the unit – This instruction is available as a separate document upon request.  
Cleaning should only be undertaken by a competent or trained person or persons.

## Draining Down Process.

**WARNING:** Before carrying out any dis-assembling operation, please ensure that the ice maker is disconnected from the electrical supply.

**(Estimated Timescale to complete – 1 hours).**

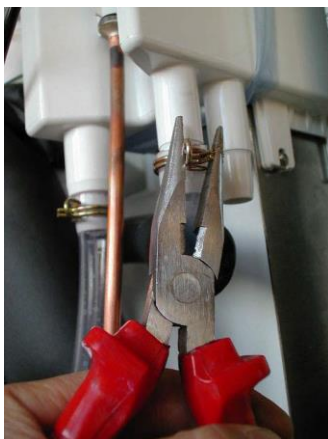
Draining of Water System:



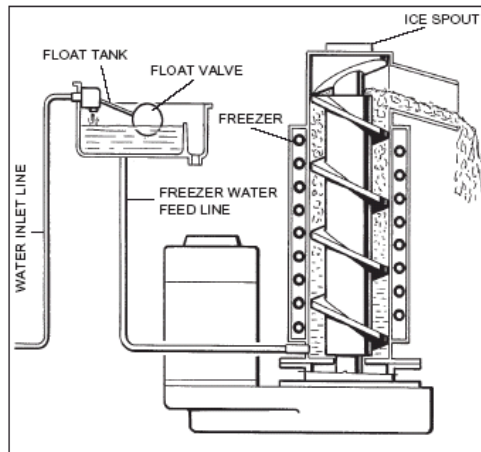
1. Turn off the electrical supply to the ice machine
2. Turn off the water supply to the ice machine
3. Remove all ice from the storage bin area



4. Remove Top and Left panels to gain access to the inside of the ice machine



5. On the tube that feeds from the water tank to the freezer assembly, Remove the pipe clamp to release from the outlet of the water tank
6. Drain contents into a bucket/jug



7. Upon finishing the 'drain down' of the unit's water system, replace all panels



8. Replace Rear, Front and Top panels to the unit.

9. Ensure all unit ventilation grills are clear from dust or debris when re-assembling the unit

**Hubbard Systems offers suitable product & service labour for the full process of cleaning & sanitizing of all Flaker & Dispenser Units, please call 01473 350045 for further detail and associated costs.**